



ASPASA

Small surface mine association

Presented by: **Letisha van den Berg**
Director: **ASPASA**

Membership



ASPASA

AT WORK

- 31 Producer Members (126 Quarries and mines)
- 16 Associate Members
- 3 Individual Members



ASPASA

Classification of mines (sizes)

Table 1 DMR Definition used by Small Scale Mining Directorate

Category	Micro (class1)	Very Small (Class 2)	Small (Class3)	Medium (Junior Class 4)
No. of employees	<5	<20	<50	<200
Assets (property excluded)	<R100 000	<R1.8million	<R4,5 million	<R18 million
Annual revenue	<R150 000	<R3 million	<R7,5 million	<R30 million

Source: South African Small Business Act 1996

Challenges



COVID Fall out - debt



Huge improvements
in the last few weeks

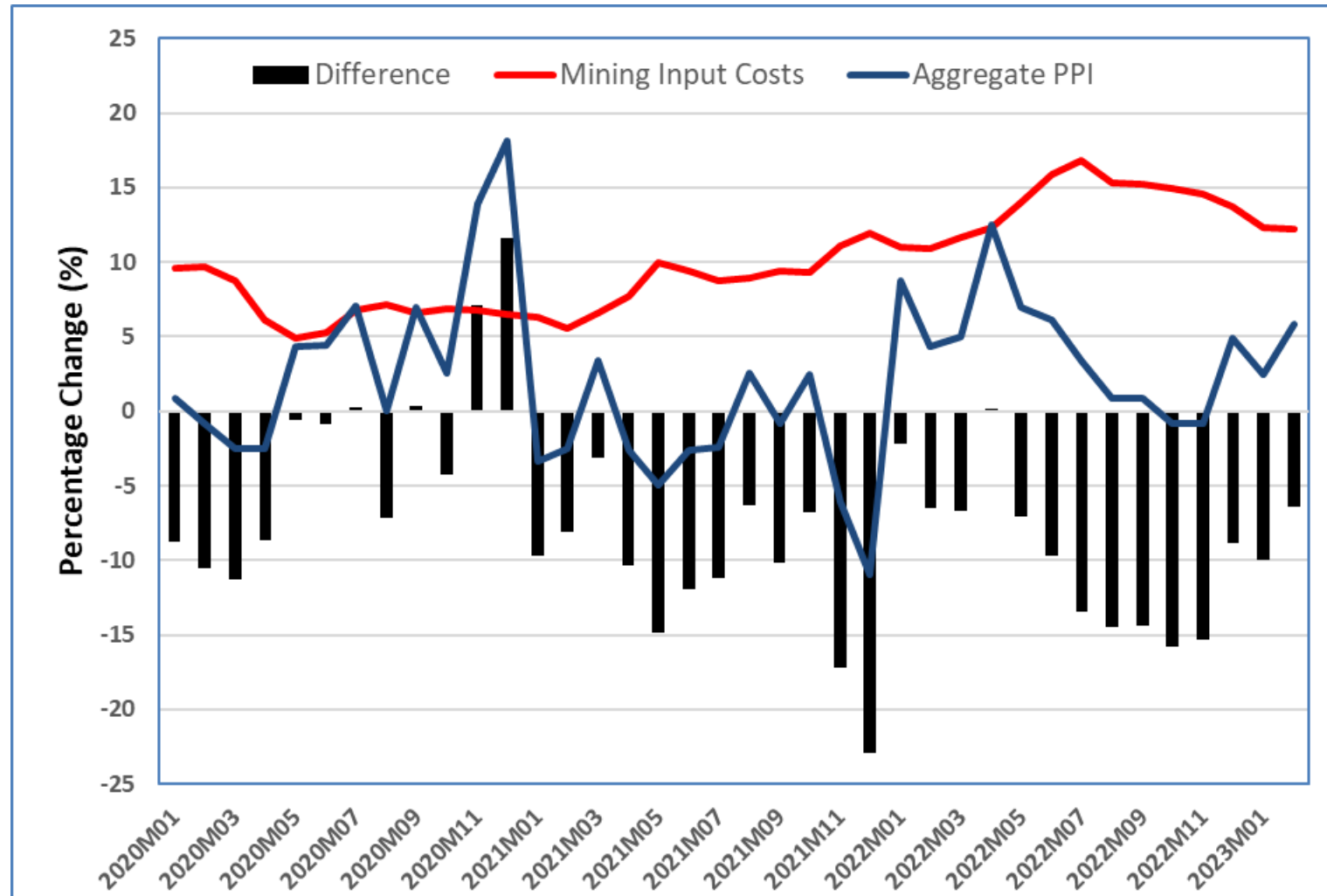
Loadshedding



Illegal mining Special Task Team

- There is a special task team developed in South Africa to address the illegal mining situation
- The task team consists of the South African Police Services and The Department of Mineral Resources and Energy
- Industry can report suspect areas to this task team
- The task team meets on a monthly basis to determine where the suspect areas are located
- It is investigated and actioned
- If it is noticed that the activity starts again, it is reported again to ensure opportunist do not go back to the areas

Input costs have been rising faster (percentage points) than the unit sales prices



Opportunities



Renewable energy



Construction work



Road repairs



ASPASA

Your voice when it matters most

